

COLOR LEGEND

ASPHALT SHINGLES; PATRIOT SLATE
 LAPPED SIDING COLOR; SW 2821 DOWNING STONE
 SHUTTERS/BARN DOORS; SW2851 SAGE GREEN, LIGHT
 TRIM AND ACCENT; SW 2846 ROYCROFT BRONZE GREEN

SW 2846
Roycroft Bronze Green
 Interior / Exterior



DOLLAR GENERAL SIGN SHOWN FOR LOCATION ONLY. SIGN DETAIL NOT PROVIDE.

ARCHITECTURAL ASPHALT SHINGLES

HARDI-SHAKES FRAMED PERGOLA AND BRACKETS, PAINTED

DOLLAR GENERAL

TAPERED CRAFTSMAN COLUMN WITH PAINTED HARDI,

VENEER BRICK PANEL

FAUX GARAGE DOORS AND SLIDING DOOR HARDWARE.

FAUX WINDOW, TYP.

FAUX GARAGE DOORS AND SLIDING DOOR HARDWARE.

ARCHITECTURAL ASPHALT SHINGLES

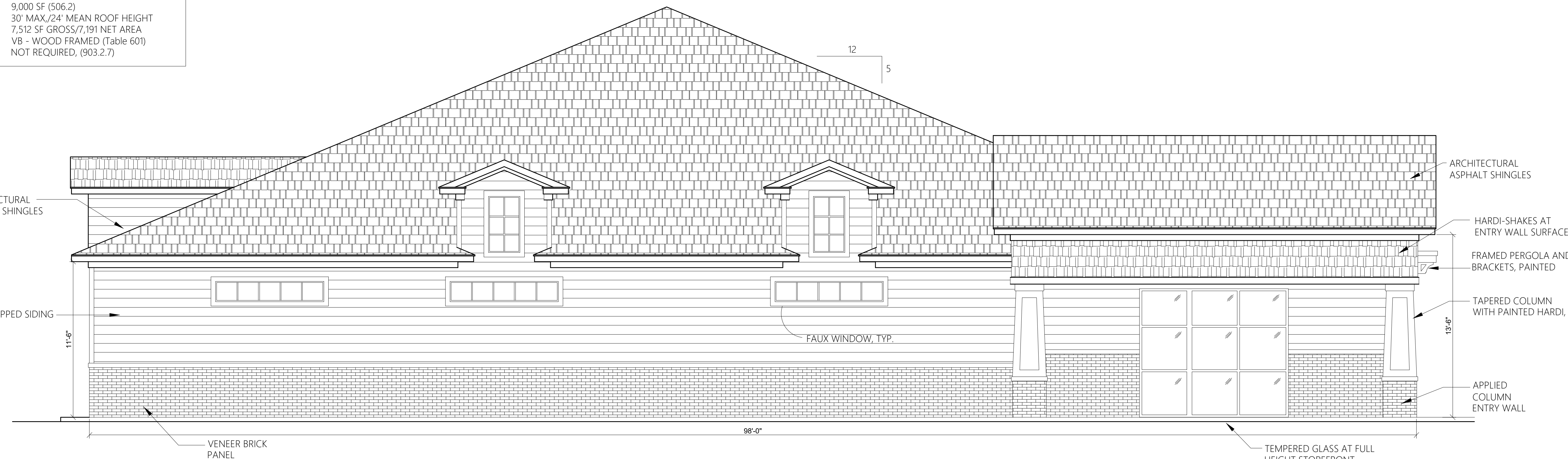
HARDI-LAPPED SIDING

BRICK VENEER

PRELIMINARY CODE ANALYSIS

OCCUPANCY TYPE: GROUP M - MERCANTILE (Section 309.1)
 ALLOWABLE HEIGHT: 40' (504.3)
 ALLOWABLE AREA: 9,000 SF (506.2)
 ACTUAL HEIGHT: 30' MAX./24' MEAN ROOF HEIGHT
 ACTUAL AREA: 7,512 SF GROSS/7,191 NET AREA
 CONSTRUCTION TYPE: VB - WOOD FRAMED (Table 601)
 FIRE SPRINKLER: NOT REQUIRED, (903.2.7)

1 PRELIMINARY NORTH ELEVATION
 SCALE: 1/4"=1'-0"



2 PRELIMINARY EAST SIDE ELEVATION
 SCALE: 1/4"=1'-0"

PLAN UPDATE
 11-19-19

P.O. Box 529
 22615 Highway 59 North
 Robertsdale, Alabama 36567
 Office: 251.947.3864
 Fax: 251.947.3138

ADAMS STEWART ARCHITECTS, LLC
 Architecture, Planning
 Interiors, Construction Administration

ISSUE	DATE	DESCRIPTION
1.	6.27.19	PRELIMINARY DESIGN REVISED
2.	11.19.19	CITY COMMENTS ADDRESSED

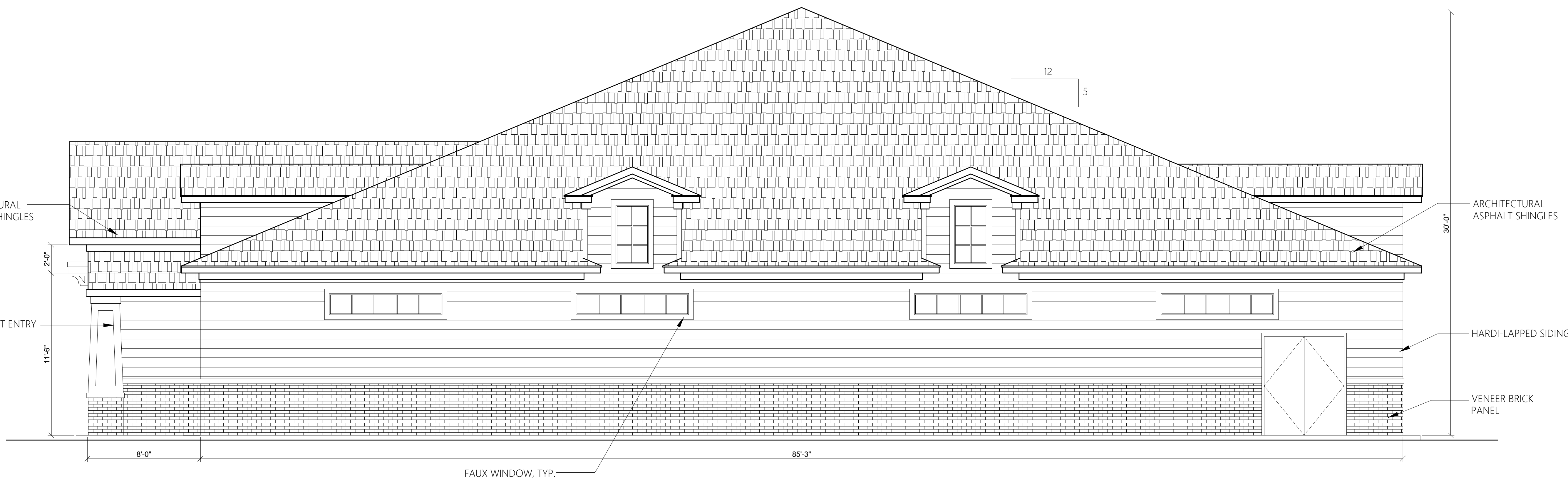
NEW STORE CONSTRUCTION, 7500 CENTER ENTRY
DOLLAR GENERAL
 Violet Avenue @ East Dorsey Ln
 Hyde Park, New York 12601

PROJECT NO: 19-000
 DRAWN BY:
 CHK'D BY:

SHEET NO:
 PRELIMINARY
 EXTERIOR
 ELEVATIONS
A02



1
A02 PRELIMINARY SOUTH ELEVATION
SCALE: 1/4"=1'-0"



2
A02 PRELIMINARY WEST SIDE ELEVATION
SCALE: 1/4"=1'-0"

PLAN UPDATE
11-19-19

P.O. Box 529
22615 Highway 59 North
Robertsdale, Alabama 36567
Office: 251.947.3864
Fax: 251.947.3138

ADAMS STEWART
ARCHITECTS, LLC
Architecture, Planning
Interiors, Construction Administration

ISSUE	DATE	DESCRIPTION
1.	6.27.19	PRELIMINARY DESIGN REVISED
2.	11.19.19	CITY COMMENTS ADDRESSED

NEW STORE CONSTRUCTION, 7500 CENTER ENTRY

DOLLAR GENERAL

Violet Avenue @ East Dorsey Ln
Hyde Park, New York 12601

PROJECT NO: 19-000
DRAWN BY:
CHK'D BY:

SHEET NO:
PRELIMINARY
EXTERIOR
ELEVATIONS
A02.1